

# Root Organizer

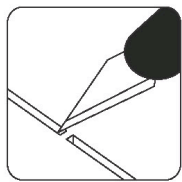
LROT

Compatible with Root  
and The Riverfolk expansion

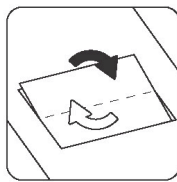
This product is not licensed, and is up for change at any time in the future.



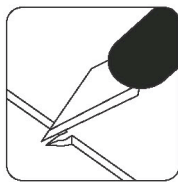
## Assembly Guide



Use an exacto knife to cut the bits connecting the parts to the frame.

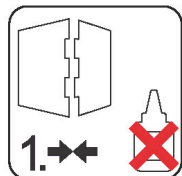


Remove the parts from the frame with a rotating motion along the axis formed by the bits you just cut.



Use the exacto knife to remove any of the remaining connection bits.

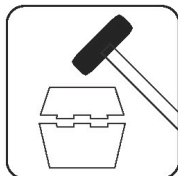
Use **wood glue** for assembly. Always dry fit the parts first to make sure the components are correct ones. If you encounter any issues, please contact us at [info@laserox.net](mailto:info@laserox.net) or our Facebook page at [facebook.com/laseroxinserts](https://facebook.com/laseroxinserts).



Always dry-fit the parts to together without any glue to make sure you are assembling the correct parts.



Use a drop of glue along the joints and hold it in place until the glue has sufficiently dried.

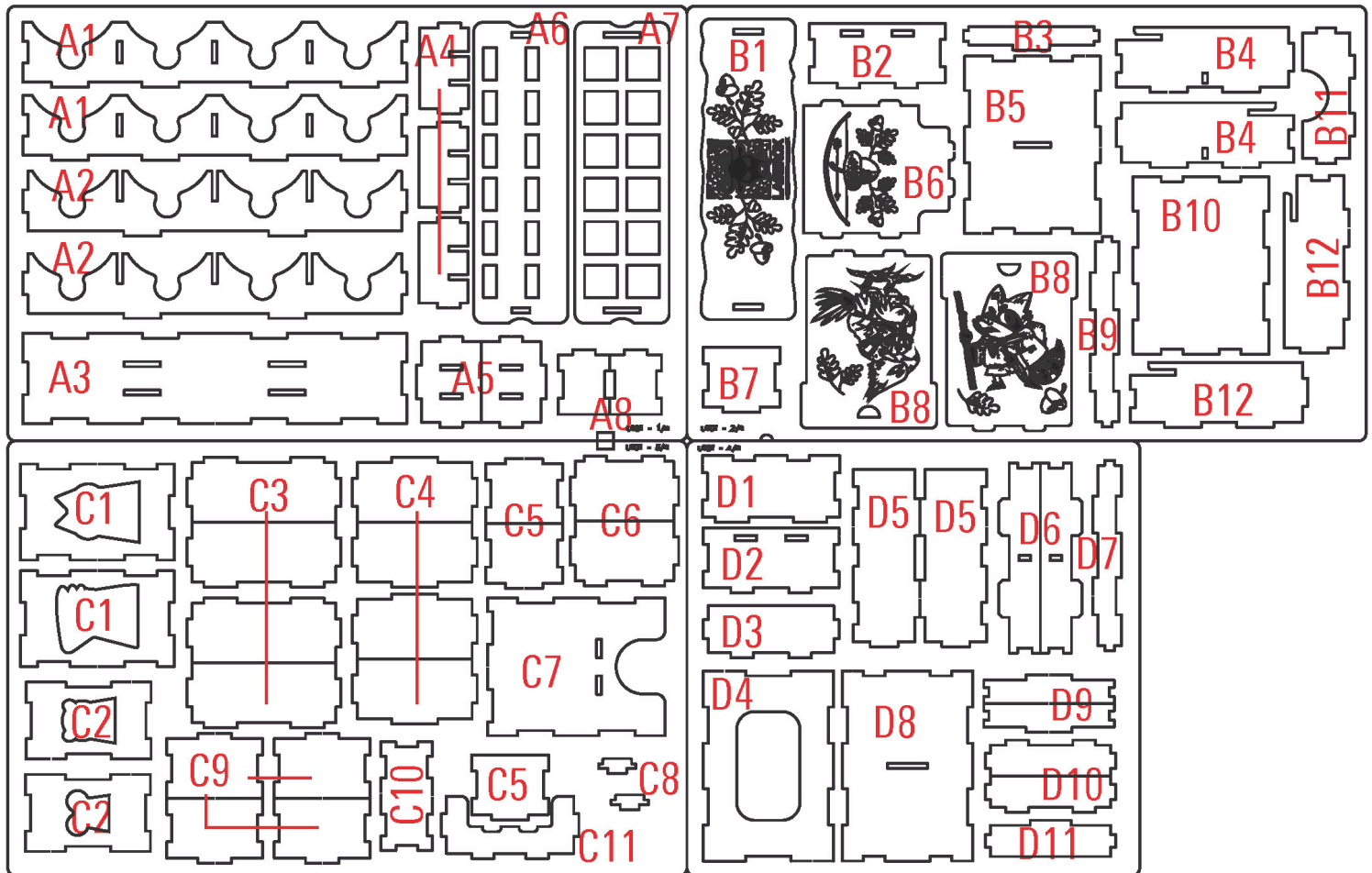


Press the parts together or use a hobby hammer with slight force for assembly.

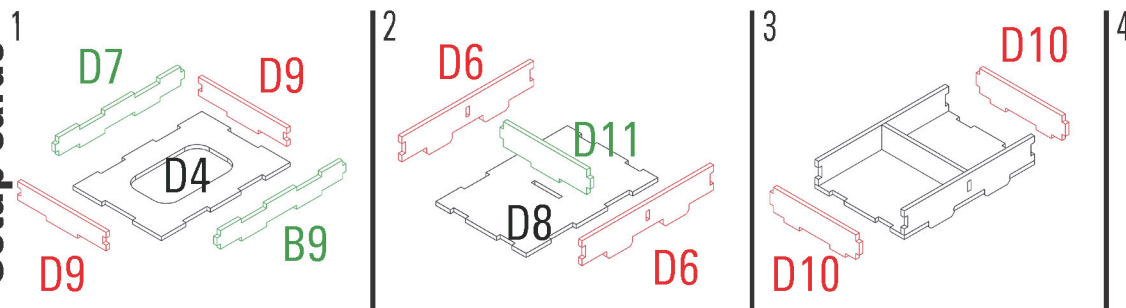


**WARNING** Choking hazard!  
Not for children under 14 years.

## Part numbers



## Setup cards



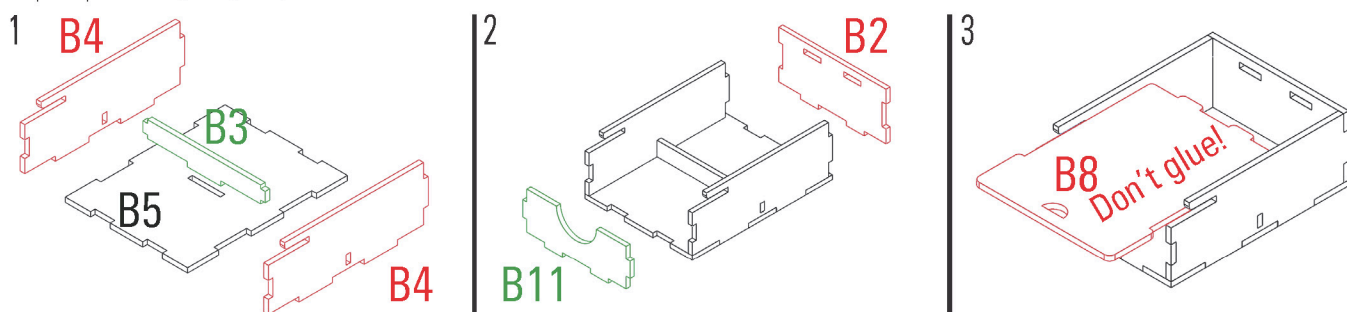
Required parts: **B9,D4,D6x2,D7,D8,D9x2,D10x2,**

## Gear tokens



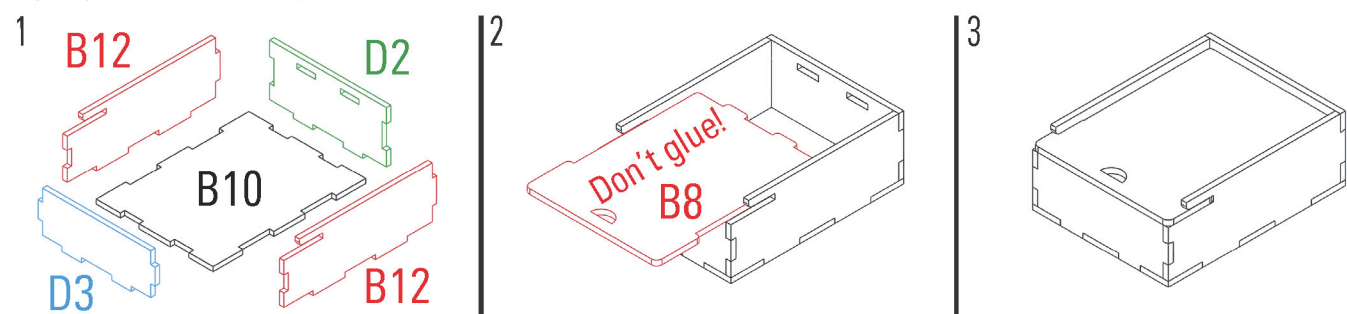
Required parts: **A6,A7,B1,C8x2**

## Vagabond



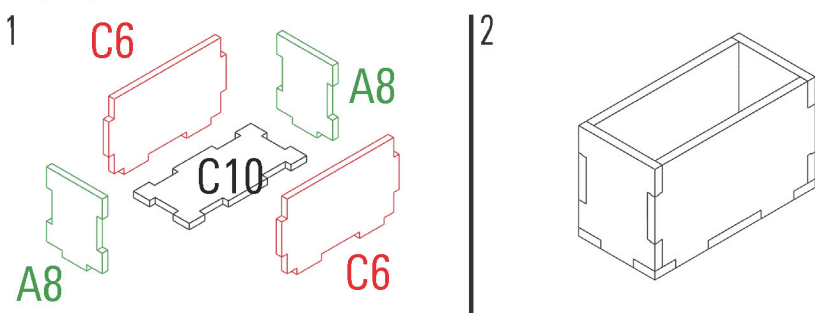
Required parts: **B2,B3,B4x2,B5,B8,B11**

## The Eyrie



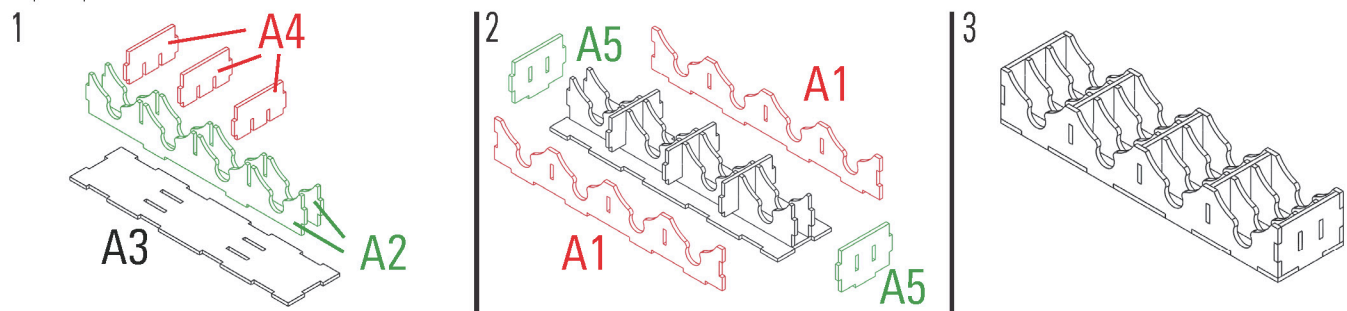
Required parts: **B8,B10,B12x2,D2,D3**

## Dice tray



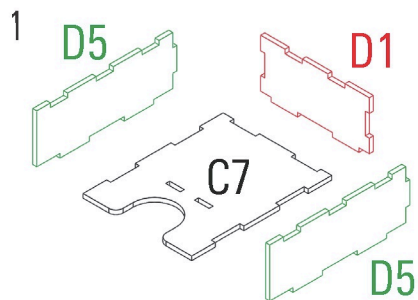
Required parts: **A8x2,V6x2,C10**

## Clearing tokens

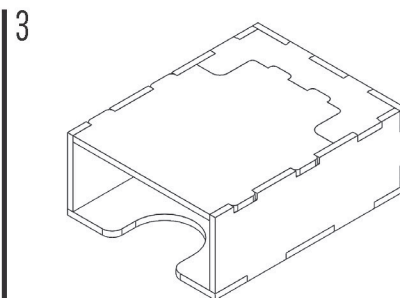
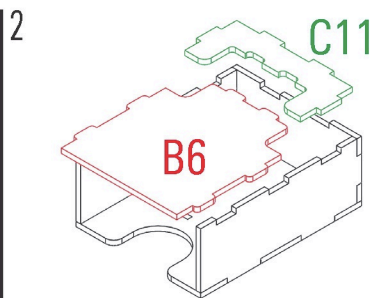


Required parts: **A1x2,A2x2,A3,A4x3,A5x2**

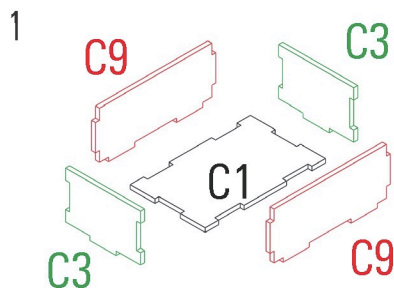
## Cards



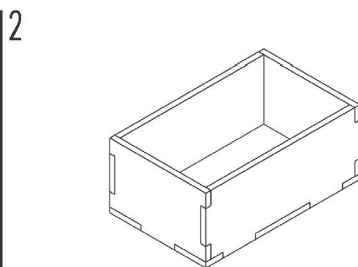
Required parts: **B6,C7,C11,D1,D5x2**



## Cat

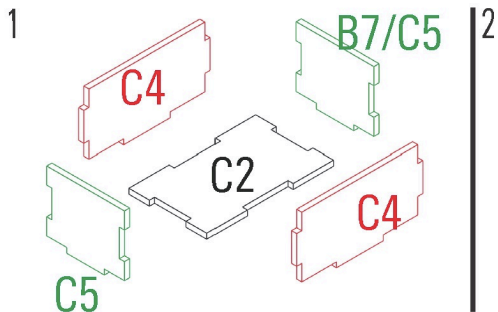


Required parts: **C1,C3x2,C9x2**

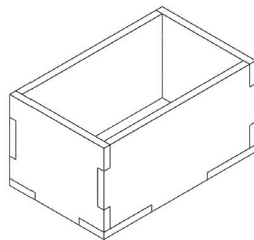


**Assemble 2x**

## Woodland

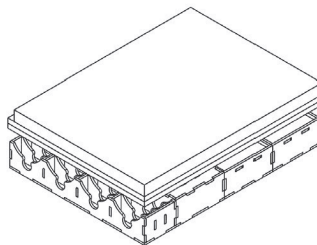
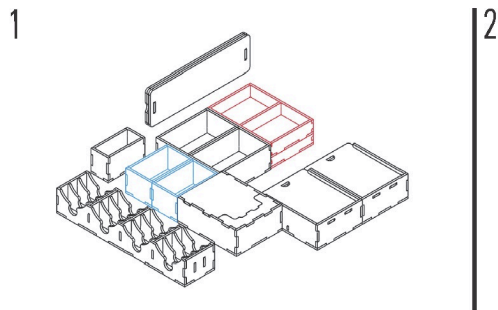


Required parts: **B7,C2x2,C4x4,C5x3**



**Assemble 2x**

## Assembly



**LASEROX**



Laserox Design Ltd.  
H-2092 Budakeszi  
Tiefenweg way 39

