

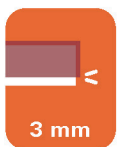
Compatible with Root: Clockwork

and following exoansions:

- Root: The Exiles and Partisans Deck
- Root: The Underworld
- Root: The Vagabond Pack

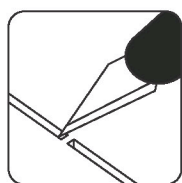


This product is not licensed, and is up for change at any time in the future.

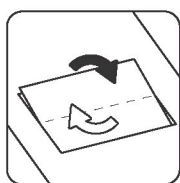


LASEROX

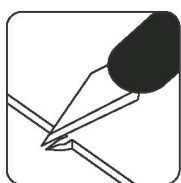
Assembly Guide



Use an exacto knife to cut the bits connecting the parts to the frame.

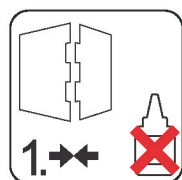


Remove the parts from the frame with a rotating motion along the axis formed by the bits you just cut.



Use the exacto knife to remove any of the remaining connection bits.

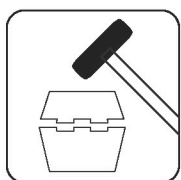
Use **wood glue** for assembly. Always dry fit the parts first to make sure the components are correct ones. If you encounter any issues, please contact us at info@laserox.net or our Facebook page at [facebook.com/laseroxinserts](https://www.facebook.com/laseroxinserts).



Always dry-fit the parts to together without any glue to make sure you are assembling the correct parts.



Use a drop of glue along the joints and hold it in place until the glue has sufficiently dried.



Press the parts together or use a hobby hammer with slight force for assembly.

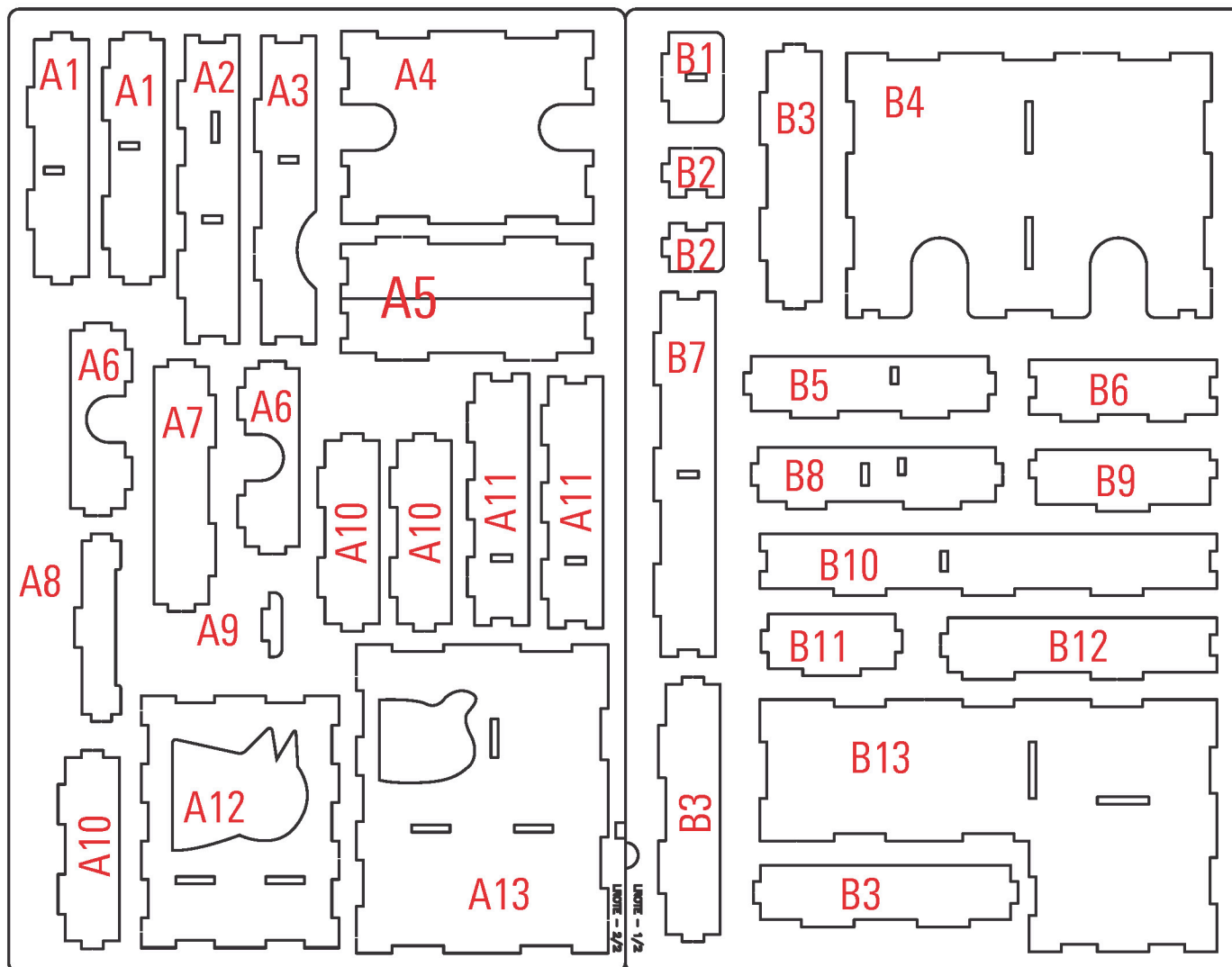


5 999567 861917

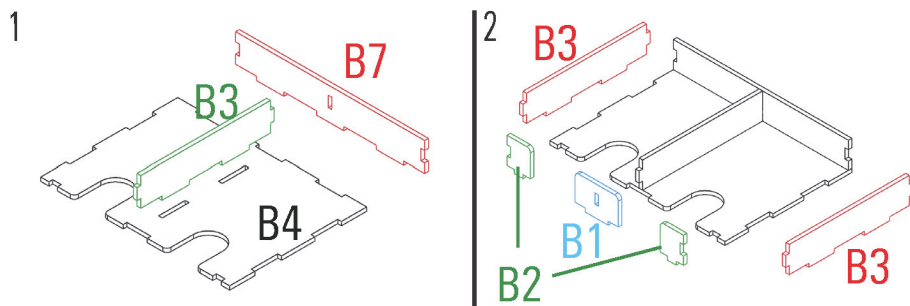


WARNING Choking hazard!
Not for children under 14 years.

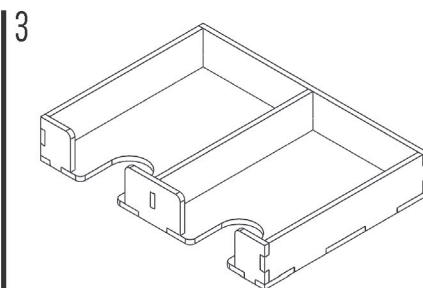
Part numbers



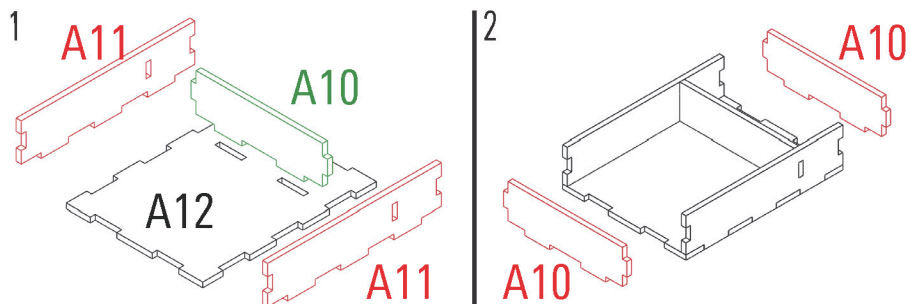
Card tray



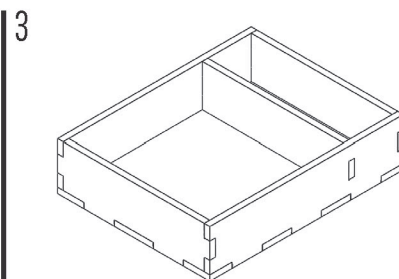
Required parts: **B1,B2x2,B3x3,B4,B7**



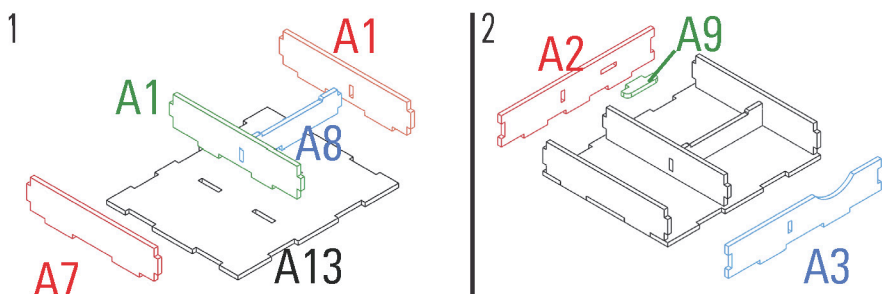
Corvid



Required parts: **A10x3,A11x2,A12**

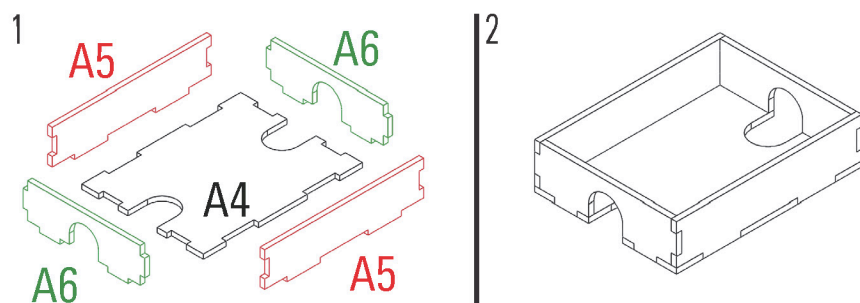


Duchy



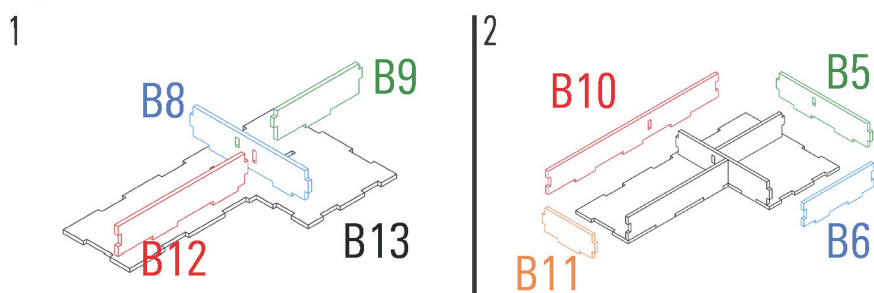
Required parts: **A1x2,A2,A3,A7,A8,A9,A13**

Single card tray

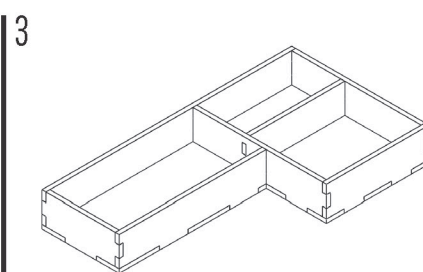


Required parts: **A4,A5x2,A6x2**

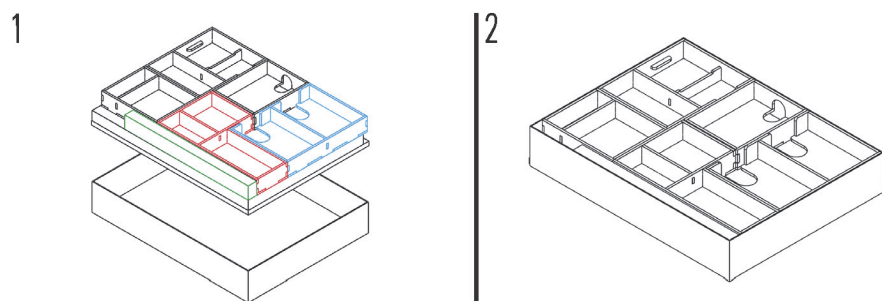
Solo dice



Required parts: **B5,B6,B8,B9,B10,B11,B12,B13**



Assembly



LASEROX

Laserox Design Ltd.
H-2092 Budakeszi
Tiefenweg way 39

