

# Legendary Insert

## Compatible with Legendary: A Marvel Deck Building Game

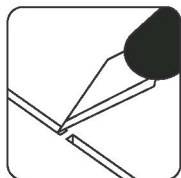
This product is not licensed and is up for change at any time in the future.



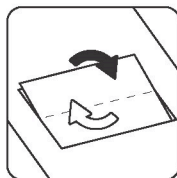
## Assembly Guide



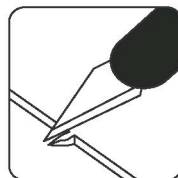
**LASEROX**



Use an exacto knife to cut the bits connecting the parts to the frame.

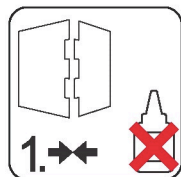


Remove the parts from the frame with a rotating motion along the axis formed by the bits you just cut.



Use the exacto knife to remove any of the remaining connection bits.

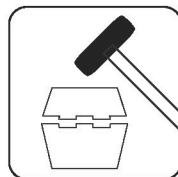
Use **wood glue** for assembly. Always dry fit the parts first to make sure the components are correct ones. If you encounter any issues, please contact us at [info@laserox.net](mailto:info@laserox.net) or our Facebook page at [facebook.com/laseroxinserts](https://facebook.com/laseroxinserts).



Always dry-fit the parts to together without any glue to make sure you are assembling the correct parts.



Use a drop of glue along the joints and hold it in place until the glue has sufficiently dried.

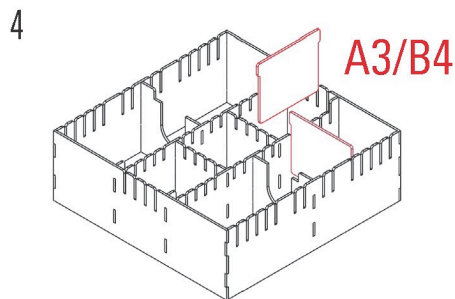
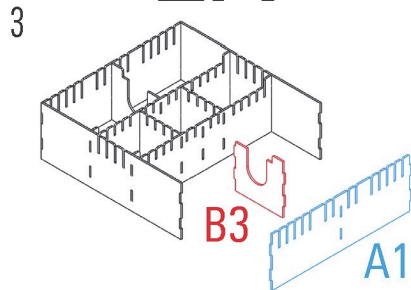
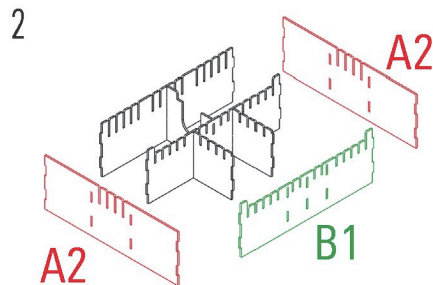
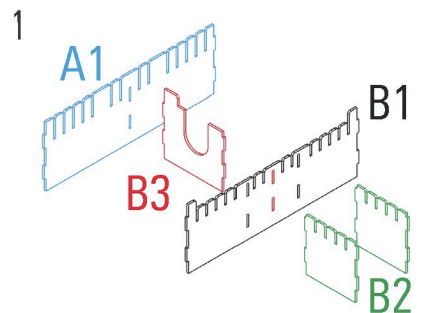
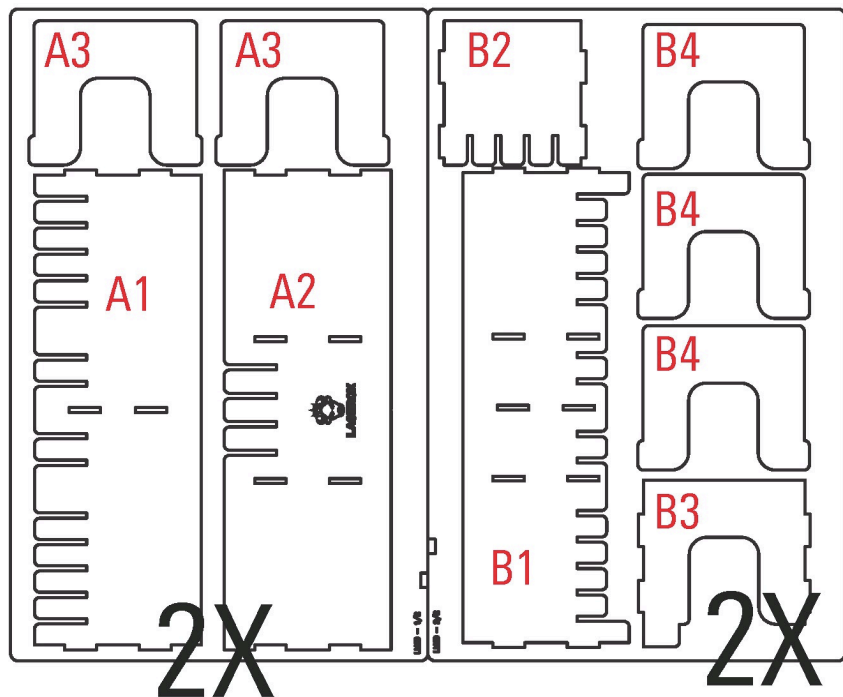


Press the parts together or use a hobby hammer with slight force for assembly.



**WARNING** Choking hazard!  
Not for children under 14 years.

# Part numbers



**LASEROX**



Laserox Design Ltd.  
H-2092 Budakeszi  
Tiefenweg way 39

