

# Human Organizer

Compatible with Human Punishment: Social Deduction 2.0 – Project: Hell Gate (2019)  
Human Punishment: Social Deduction 2.0 – Weishaupt KI (2019)  
Human Punishment: Social Deduction 2.0 – Brettspielblog (2018)  
Human Punishment: Social Deduction 2.0 – Con V Tion (2018)

This product is officially licensed by Godot Games™, and is up for change at any time in the future.



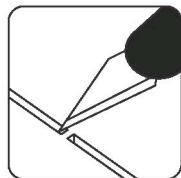
## Assembly Guide



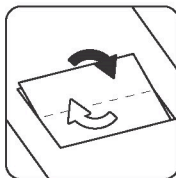
LHMP



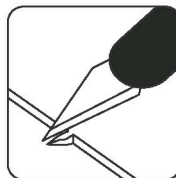
**LASEROX**



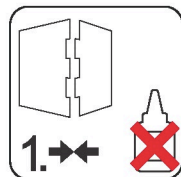
Use an exacto knife to cut the bits connecting the parts to the frame.



Remove the parts from the frame with a rotating motion along the axis formed by the bits you just cut.



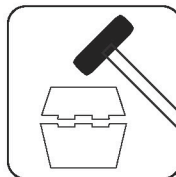
Use the exacto knife to remove any of the remaining connection bits.



Always dry-fit the parts to together without any glue to make sure you are assembling the correct parts.



Use a drop of glue along the joints and hold it in place until the glue has sufficiently dried.

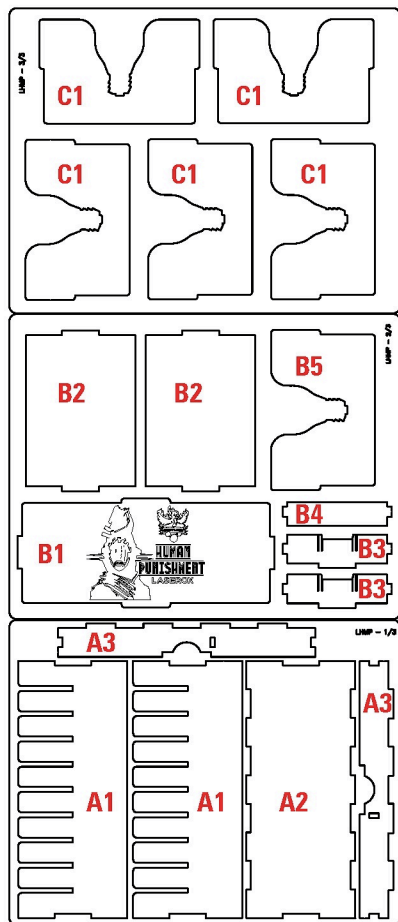


Press the parts together or use a hobby hammer with slight force for assembly.

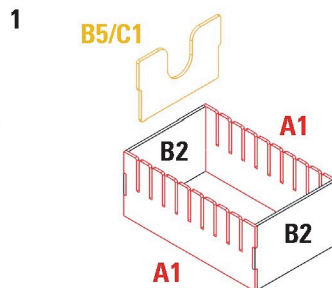
Use **wood glue** for assembly. Always dry fit the parts first to make sure the components are correct ones. If you encounter any issues, please contact us at [info@laserox.net](mailto:info@laserox.net) or our Facebook page at [facebook.com/laseroxinserts](https://facebook.com/laseroxinserts).



**WARNING** Choking hazard!  
Not for children under 14 years.

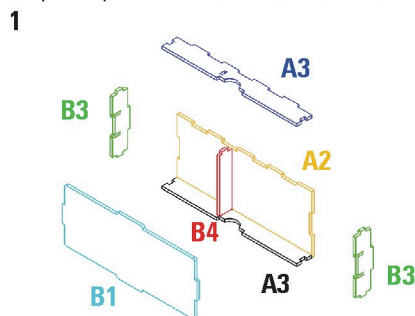


### Card Tray



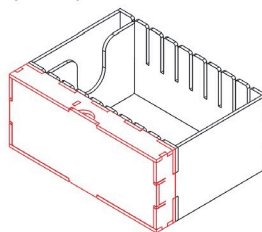
Required parts: **A1**x2, **B2**x2, **B5**, **C1**x5,

### Token Tray

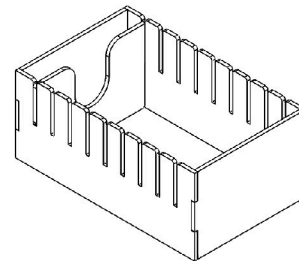


Required parts: **A2**, **A3**x2, **B1**, **B3**x2, **B4**,

### Assembly



2



2

